

Trombone

# MID-YEAR ASSESSMENT

## 1. Scale: Concert E-Flat

Major Scale



Chromatic Scale

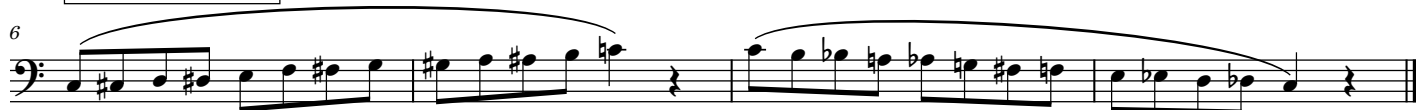


## 2. Scale: Concert C

Major Scale



Chromatic Scale



## 3. Rhythmic Etude

*please record with a metronome set to approx. 100 BPM*

♩ = 100



Trombone

# 4. Lyrical Study: Old Home Days

0m18s in video

Largo e sostenuto  $\text{♩} = 84$

*p dolce*

7 *mp* *p* *mf* *p dolce*

15

# 5. Holst March (optional challenge)

*This excerpt is in CUT TIME!*

0m11s in video

Allegro  $\text{♩} = 120$

*f*

7

Trombone

# 6. Autumn Leave Solo (Chet Baker)

*optional for those auditioning for Jazz Ens.*

0m10s in video

